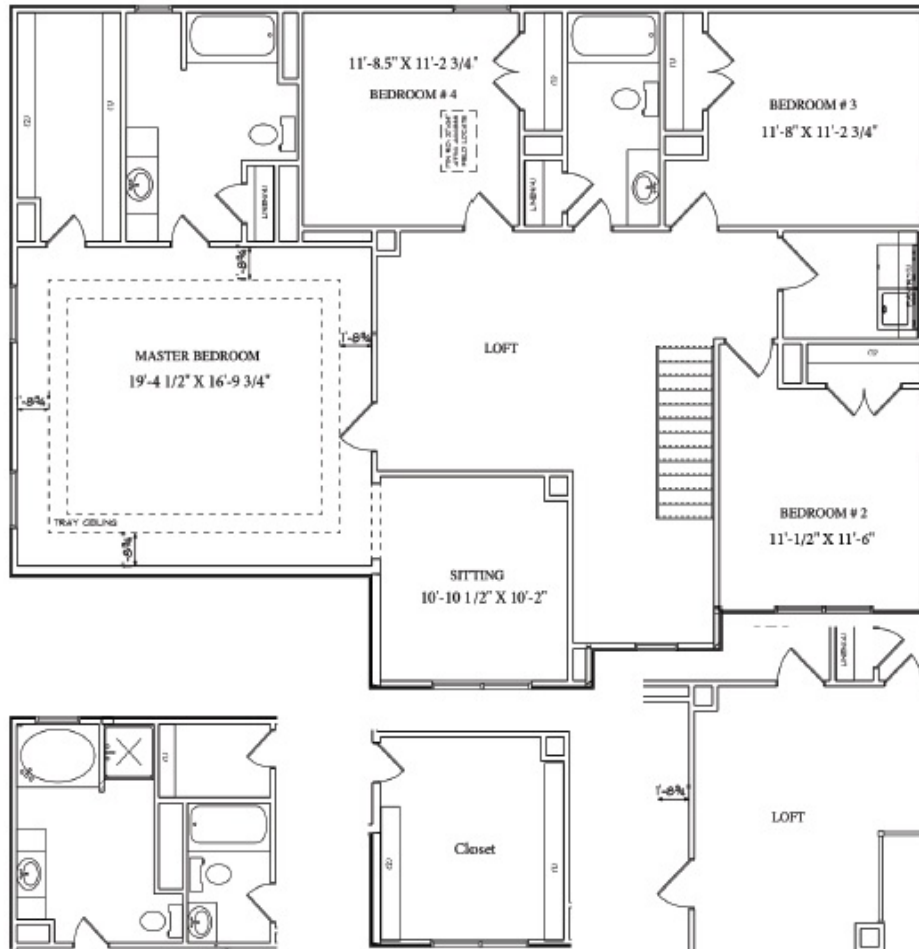


Brookville at Forest Glen
Forest Glen Lane, Palmyra, VA, 22963
4-5 Bedrooms, 2.5-3 Bathrooms
2,880 Sq. Ft.
Starting at \$ \$329,990

WB
WESTBRIDGE
BUILDERS

1st Floor - 1355 Sq. ft.



Optional additional Bath/
 Garden Bath and Shower
 Sitting Area Becomes Closet

Optional Open Loft in
 Lieu of Sitting Area

Model Hours

Monday, Thursday & Friday 11AM - 6PM
Saturday: 11AM - 5PM
Sunday: 12PM - 5PM

540-603-0083

www.WestbridgeBuilders.com
Sales@WestbridgeBuilders.com

101 Countryside Dr., Louisa, VA 23093



Brookville at Forest Glen

Forest Glen Lane, Palmyra, VA, 22963

4-5 Bedrooms, 2.5-3 Bathrooms

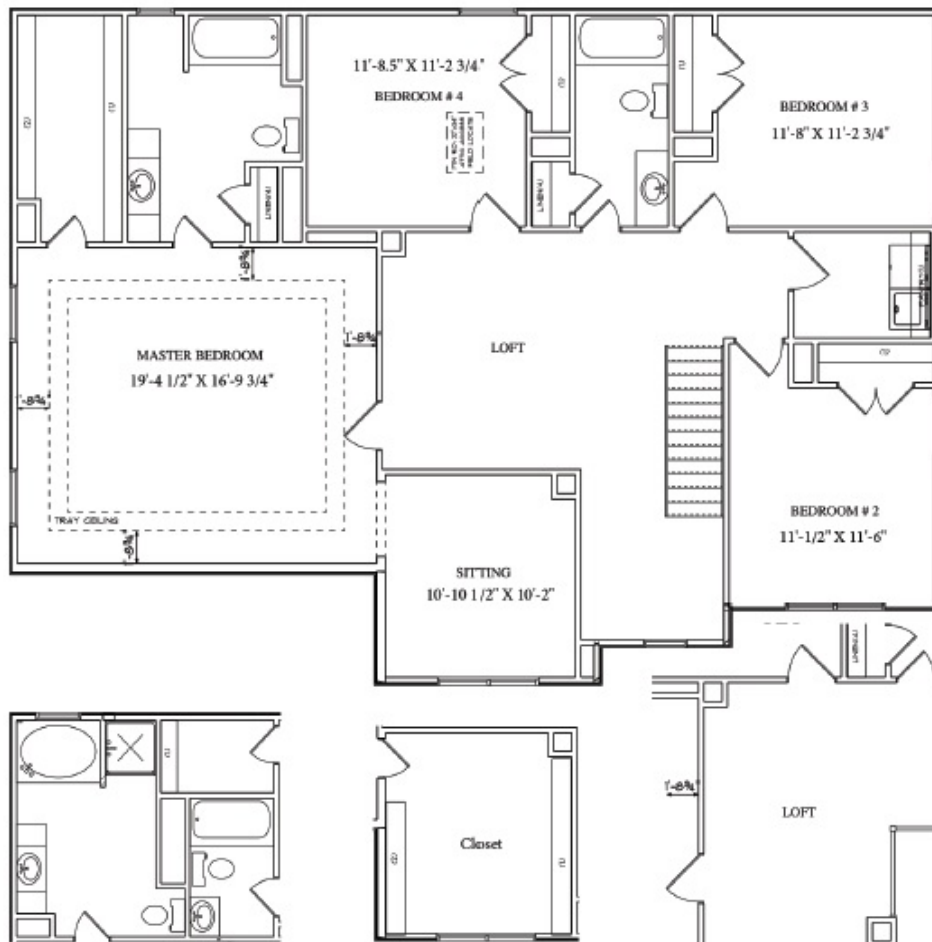
2,880 Sq. Ft.

Starting at \$ \$329,990



WESTBRIDGE
BUILDERS

2nd Floor - 1535 Sq. ft.



Optional additional Bath/
Garden Bath and Shower
Sitting Area Becomes Closet

Optional Open Loft in
Lieu of Sitting Area

Model Hours

Monday, Thursday & Friday 11AM - 6PM

Saturday: 11AM - 5PM

Sunday: 12PM - 5PM

101 Countryside Dr., Louisa, VA 23093

540-603-0083

www.WestbridgeBuilders.com

Sales@WestbridgeBuilders.com

