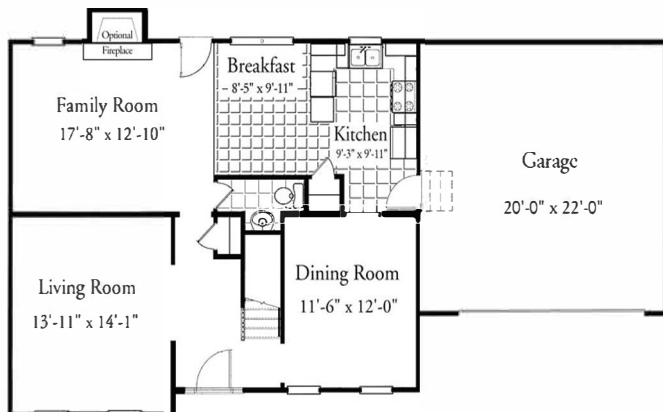


The Brixton II

WESTBRIDGE
BUILDERS

4 Bedrooms 2.5 Bathrooms

2,334 square feet



Features:

Living Room, Dining Room, Family Room, and Half Bath on 1st Floor

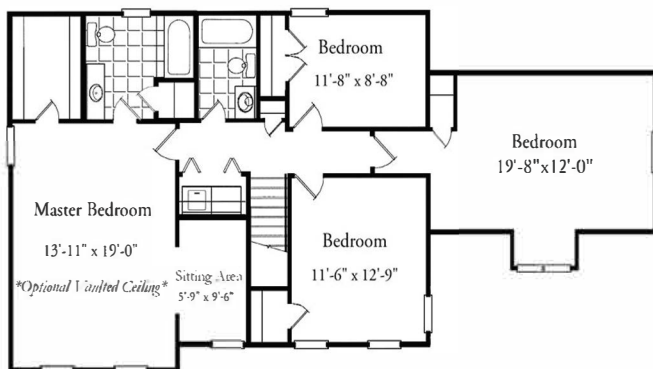
Master Bedroom w/ Walk in Closet and Sitting Room

12x10 Treated Deck

Stainless-Steel Kenmore Appliances

2 Car Side-Load Garage

Included Country Porch



Options:

Separate Garden Tub and Shower in Master

Optional Brick Foundation and Front

9 ft Ceilings and 42 Inch Wall Cabinets

w/ Crown Molding

Model Hours:

Wednesday - Friday : 12pm - 6pm

Saturday : 1pm - 5pm

(540) 603 0083

101 Countryside Drive

Louisa VA 23093.



www.westbridgebuilders.com
sales@westbridgebuilders.com

